

PowerFilm[®]

MADE IN THE USA

SOLAR

Electronic Component Solar Panels

Classic Application Series

The Classic Application Series offer a new opportunity to solve the old problem of limited power for wireless electronics designed for portable and remote applications. Classic Application panels are lightweight, paper thin, and durable.

Their ultra-thin profile enables them to be easily integrated into devices for solar recharging or for direct power. Panels have been specifically developed to recharge a variety of common battery sizes. These panels do not have a UV-stabilized surface, but are suitable for intermittent outdoor use.

Are you looking for a custom Electronic Component Solar Panel? We offer custom sizes, voltages, encapsulations and substrates.

Contact us at www.powerfilmsolar.com to learn more.

ONP1.2-12x24

Electrical Specifications:

Full Sun

Power: 4mW
Operating Voltage: 1.2V
Operating Current: 3.3mA

1/4 Sun

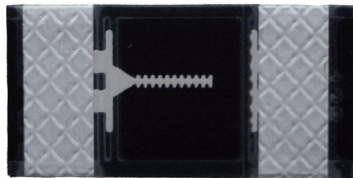
Power: 0.9mW
Operating Voltage: 1.2V
Operating Current: 0.7mA

All Levels

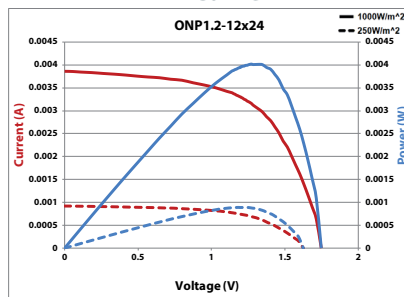
Average Voc: 1.6V
Maximum Voc: 1.9V
Isc: 4.3mA

Physical Specifications:

Dimensions:
24.0 x 12.0 (mm)
0.94 x 0.47 (in)
Weight: 0.003oz / 0.09g



IV Curve



ONP1.2-37x54

Electrical Specifications:

Full Sun

Power: 70mW
Operating Voltage: 1.2V
Operating Current: 50.8mA

1/4 Sun

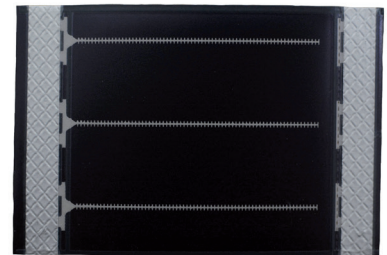
Power: 13.7mW
Operating Voltage: 1.2V
Operating Current: 11.4mA

All Levels

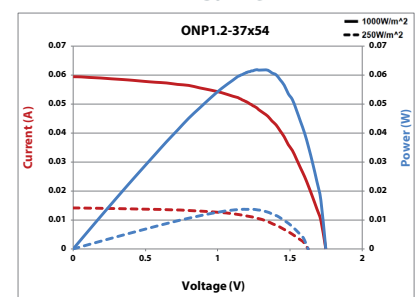
Average Voc: 1.6V
Maximum Voc: 1.9V
Isc: 66mA

Physical Specifications:

Dimensions:
54.0 x 36.5 (mm)
2.13 x 1.44 (in)
Weight: 0.02oz / 0.58g



IV Curve

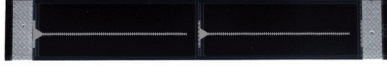


PowerFilm[®]

SOLAR

MADE IN THE USA

ONP2.4-15x94



Electrical Specifications:

Full Sun

Power: 45mW
 Operating Voltage: 2.4V
 Operating Current: 18.6mA

1/4 Sun

Power: 10.1mW
 Operating Voltage: 2.4V
 Operating Current: 4.2mA

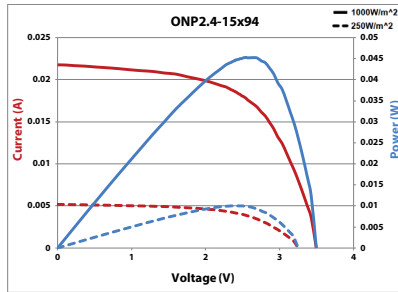
All Levels

Average Voc: 3.2V
 Maximum Voc: 3.7V
 Isc: 24.2mA

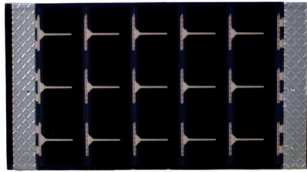
Physical Specifications:

Dimensions:
 94.0 x 14.6 (mm)
 3.70 x 0.57 (in)
 Weight: 0.01oz / 0.40g

IV Curve



SP3-37



Electrical Specifications:

Full Sun

Power: 66mW
 Operating Voltage: 3.0V
 Operating Current: 22mA

1/4 Sun

Power: 15mW
 Operating Voltage: 3.0V
 Operating Current: 5.0mA

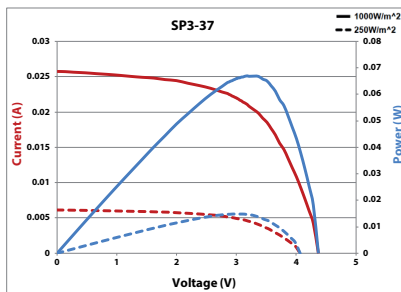
All Levels

Average Voc: 4.1V
 Maximum Voc: 4.6V
 Isc: 28.0mA

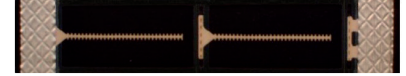
Physical Specifications:

Dimensions:
 64.0 x 36.5 (mm)
 2.52 x 1.44 (in)
 Weight: 0.03oz / 0.85g

IV Curve



MPT2.4-21



Electrical Specifications:

Full Sun

Power: 34mW
 Operating Voltage: 2.4V
 Operating Current: 14.2mA

1/4 Sun

Power: 7.7mW
 Operating Voltage: 2.4V
 Operating Current: 3.2mA

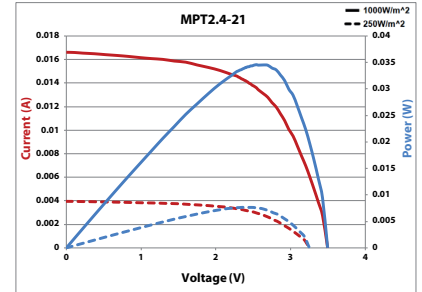
All Levels

Average Voc: 3.2V
 Maximum Voc: 3.7V
 Isc: 18.3mA

Physical Specifications:

Dimensions:
 54.0 x 20.9 (mm)
 2.13 x 0.82 (in)
 Weight: 0.02oz / 0.40g

IV Curve



MP3-25



Electrical Specifications:

Full Sun

Power: 93mW
 Operating Voltage: 3.0V
 Operating Current: 31mA

1/4 Sun

Power: 21mW
 Operating Voltage: 3.0V
 Operating Current: 7.0mA

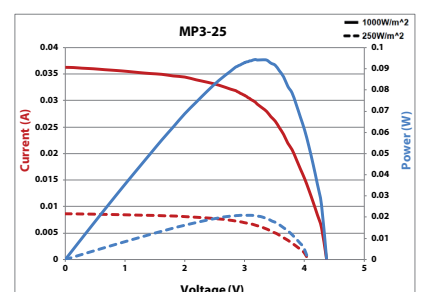
All Levels

Average Voc: 4.1V
 Maximum Voc: 4.6V
 Isc: 35mA

Physical Specifications:

Dimensions:
 114.0 x 24.0 (mm)
 4.49 x 0.94 (in)
 Weight: 0.03oz / 0.85g

IV Curve



PowerFilm[®]

SOLAR

MADE IN THE USA

MP3-37

Electrical Specifications:

Full Sun

Power: 150mW
Operating Voltage: 3.0V
Operating Current: 50mA

1/4 Sun

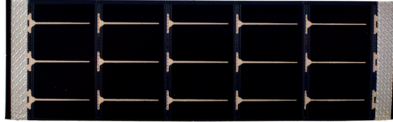
Power: 34mW
Operating Voltage: 3.0V
Operating Current: 11.3mA

All Levels

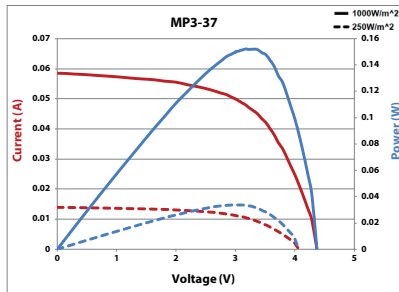
Average Voc: 4.1V
Maximum Voc: 4.6V
Isc: 63mA

Physical Specifications:

Dimensions:
114.0 x 36.5 (mm)
4.49 x 1.44 (in)
Weight: 0.04oz / 1.13g



IV Curve



MPT3.6-75

Electrical Specifications:

Full Sun

Power: 180mW
Operating Voltage: 3.6V
Operating Current: 50mA

1/4 Sun

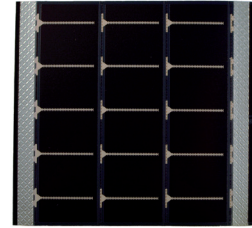
Power: 41mW
Operating Voltage: 3.6V
Operating Current: 11.3mA

All Levels

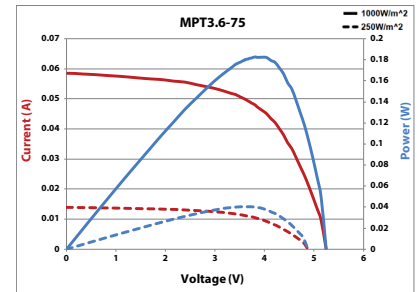
Average Voc: 4.9V
Maximum Voc: 5.5V
Isc: 64mA

Physical Specifications:

Dimensions:
74.0 x 73.0 (mm)
2.91 x 2.87 (in)
Weight: 0.06oz / 1.70g



IV Curve



MPT3.6-150

Electrical Specifications:

Full Sun

Power: 360mW
Operating Voltage: 3.6V
Operating Current: 100mA

1/4 Sun

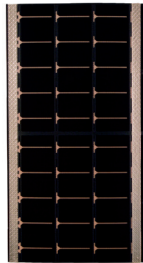
Power: 81mW
Operating Voltage: 3.6V
Operating Current: 22.5mA

All Levels

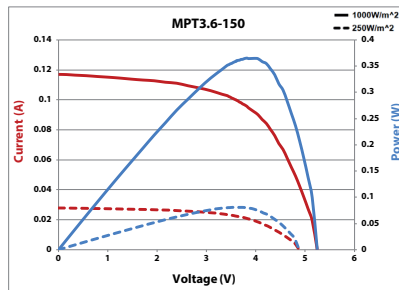
Average Voc: 4.9V
Maximum Voc: 5.5V
Isc: 128mA

Physical Specifications:

Dimensions:
74.0 x 146.0 (mm)
2.91 x 5.75 (in)
Weight: 0.10oz / 2.83g



IV Curve



SP4.2-37

Electrical Specifications:

Full Sun

Power: 92mW
Operating Voltage: 4.2V
Operating Current: 22mA

1/4 Sun

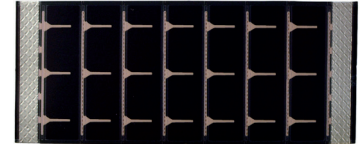
Power: 21mW
Operating Voltage: 4.2V
Operating Current: 5.0mA

All Levels

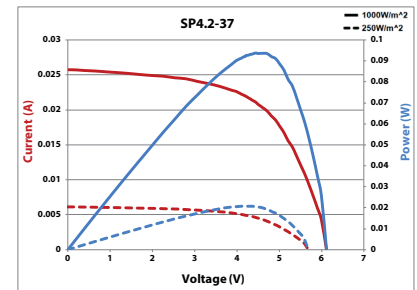
Average Voc: 5.9V
Maximum Voc: 6.5V
Isc: 28mA

Physical Specifications:

Dimensions:
84.0 x 36.5 (mm)
3.31 x 1.44 (in)
Weight: 0.03oz / 0.85g



IV Curve



PowerFilm[®]

SOLAR

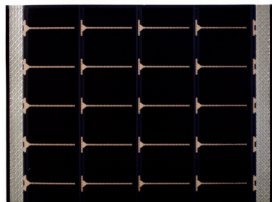
MADE IN THE USA

MPT4.8-75

Electrical Specifications:

Full Sun

Power: 240mW
 Operating Voltage: 4.8V
 Operating Current: 50mA



1/4 Sun

Power: 54mW
 Operating Voltage: 4.8V
 Operating Current: 11.3mA

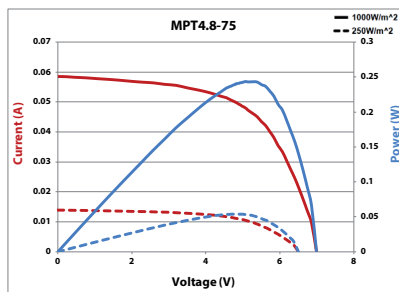
All Levels

Average Voc: 6.4V
 Maximum Voc: 7.4V
 Isc: 64mA

Physical Specifications:

Dimensions:
 94.0 x 73.0 (mm)
 3.70 x 2.87 (in)
 Weight: 0.07oz / 1.98g

IV Curve

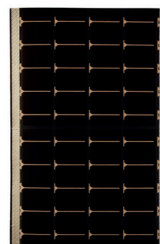


MPT4.8-150

Electrical Specifications:

Full Sun

Power: 480mW
 Operating Voltage: 4.8V
 Operating Current: 100mA



1/4 Sun

Power: 108mW
 Operating Voltage: 4.8V
 Operating Current: 22.5mA

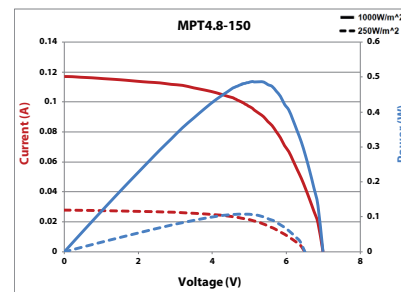
All Levels

Average Voc: 6.4V
 Maximum Voc: 7.4V
 Isc: 128mA

Physical Specifications:

Dimensions:
 94.0 x 146.0 (mm)
 3.70 x 5.75 (in)
 Weight: 0.10oz / 2.83g

IV Curve



MPT6-75

Electrical Specifications:

Full Sun

Power: 300mW
 Operating Voltage: 6.0V
 Operating Current: 50mA



1/4 Sun

Power: 68mW
 Operating Voltage: 6.0V
 Operating Current: 11.3mA

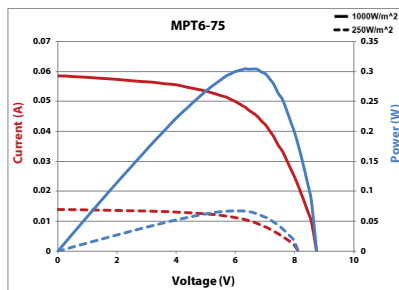
All Levels

Average Voc: 8.0V
 Maximum Voc: 9.3V
 Isc: 64mA

Physical Specifications:

Dimensions:
 114.0 x 73.0 (mm)
 4.49 x 2.87 (in)
 Weight: 0.08oz / 2.30g

IV Curve

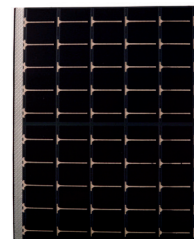


MPT6-150

Electrical Specifications:

Full Sun

Power: 600mW
 Operating Voltage: 6.0V
 Operating Current: 100mA



1/4 Sun

Power: 135mW
 Operating Voltage: 6.0V
 Operating Current: 22.5mA

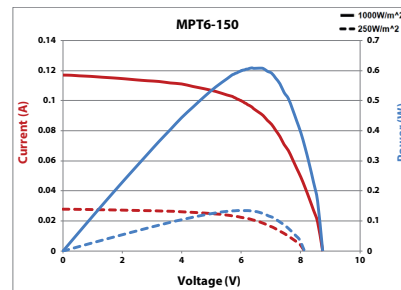
All Levels

Average Voc: 8.0V
 Maximum Voc: 9.3V
 Isc: 128mA

Physical Specifications:

Dimensions:
 114.0 x 146.0 (mm)
 4.49 x 5.75 (in)
 Weight: 0.10oz / 2.83g

IV Curve

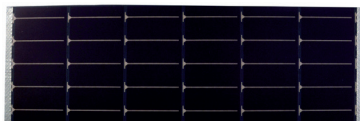


PowerFilm[®]

SOLAR

MADE IN THE USA

MP7.2-75F



Electrical Specifications:

Full Sun

Power: 864mW
 Operating Voltage: 7.2V
 Operating Current: 120mA

1/4 Sun

Power: 194mW
 Operating Voltage: 7.2V
 Operating Current: 27.0mA

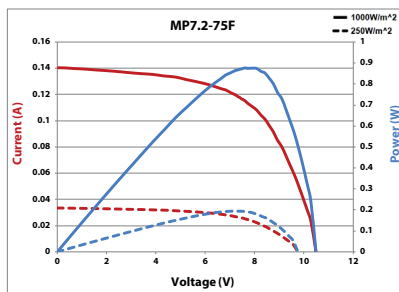
All Levels

Average Voc: 10.5V
 Maximum Voc: 11.1V
 Isc: 154mA

Physical Specifications:

Dimensions:
 253.0 x 73.0 (mm)
 9.96 x 2.87 (in)
 Weight: 0.50oz / 14.17g

IV Curve



MP7.2-150F



Electrical Specifications:

Full Sun

Power: 1.73W
 Operating Voltage: 7.2V
 Operating Current: 240mA

1/4 Sun

Power: 389mW
 Operating Voltage: 7.2V
 Operating Current: 54.0mA

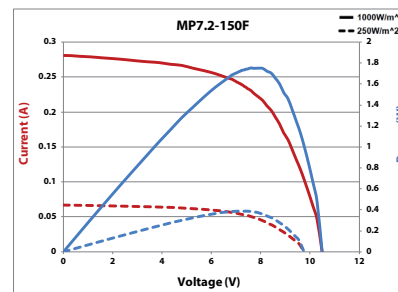
All Levels

Average Voc: 10.5V
 Maximum Voc: 11.1V
 Isc: 308mA

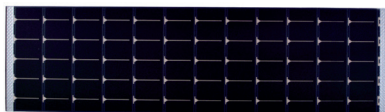
Physical Specifications:

Dimensions:
 253.0 x 146.0 (mm)
 9.96 x 5.75 (in)
 Weight: 0.90oz / 25.51g

IV Curve



MPT15-75



Electrical Specifications:

Full Sun

Power: 770mW
 Operating Voltage: 15.4V
 Operating Current: 50mA

1/4 Sun

Power: 173mW
 Operating Voltage: 15.4V
 Operating Current: 11.3mA

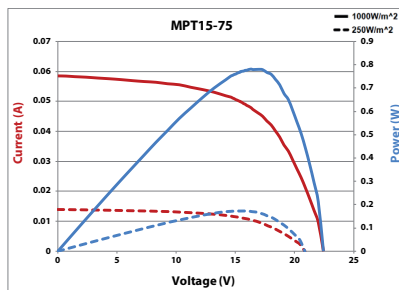
All Levels

Average Voc: 19.0V
 Maximum Voc: 22.2V
 Isc: 64mA

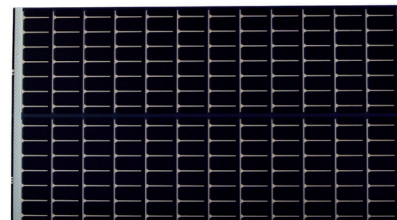
Physical Specifications:

Dimensions:
 253.0 x 73.0 (mm)
 9.96 x 2.87 (in)
 Weight: 0.50oz / 14.17g

IV Curve



MPT15-150



Electrical Specifications:

Full Sun

Power: 1.54W
 Operating Voltage: 15.4V
 Operating Current: 100mA

1/4 Sun

Power: 347mW
 Operating Voltage: 15.4V
 Operating Current: 22.5mA

All Levels

Average Voc: 19.0V
 Maximum Voc: 22.2V
 Isc: 128mA

Physical Specifications:

Dimensions:
 253.0 x 146.0 (mm)
 9.96 x 5.75 (in)
 Weight: 1.00oz / 28.35g

IV Curve

