

Panel Specifications

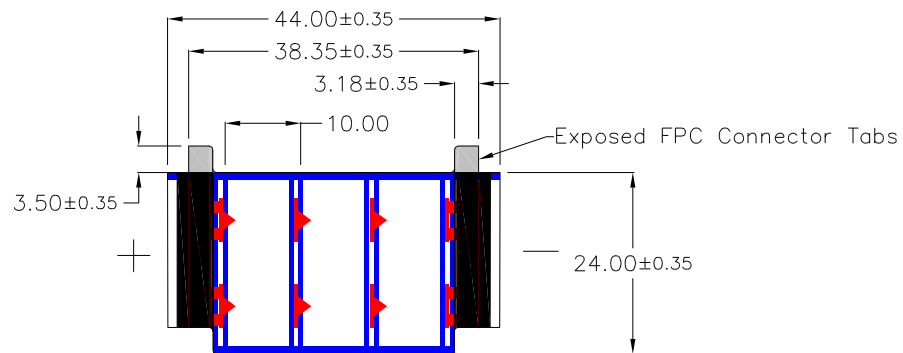
Electrical:

1000 Lux: 63.4uA at 3.2V (171uW)¹
 200 Lux: 13uA at 2.4V (31.1uW)
 Max Voc: 5.55V (Direct Sunlight)²
 Average Isc: 9.8mA (Direct Sunlight)²

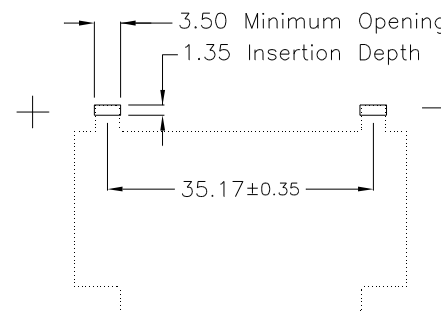
Mechanical:

f/b Laminate: 3 mil / 3 mil PET
 3/16 in Copper Foil Busbar with Black
 Thickness: 0.22 mm³
 Appr. Weight: 0.26 grams
 Operating Temperature: -25C to 65C⁴
 Bend Radius: 1 inch static, 3 inch repetitive⁵
 UV and Moisture Protection: Limited⁶
 Exposed 0.2mm FPC Connector Tabs

REVISIONS		DRAWING NO.	
		INP3.6-24x44T	
REV	DESCRIPTION	REVIEW	DATE
1	3 Cell 24 x 44 mm Low Light Tandem Module with 0.2mm FPC Tabs		1/18/2021



Recommended FPC Connector Placement
 - Fits 0.2mm FFC/FCB Thickness Connectors



Panel Information, Handling and Assembly Best Practices



1. Tested under a cool white LED spectrum.
2. Extended exposure to above rated light intensity can reduce panel performance.
3. Copper foil bustape increases thickness by approximately 0.17mm.
4. High temperature laminates available for up to 85C continuous, 100C peak (4h daily).
5. Contact engineering support for tighter flexing requirements.
6. Tolerant to intermittent exposure to UV, moisture and weather. Full UV and weatherproofing options are available.

This document contains information which is the property of PowerFilm Inc. It is not to be duplicated, used, or disclosed in whole or in part for any purpose without prior written permission of PowerFilm Inc. All Dimensions +/- 1.2 mm unless specified.		PowerFilm Inc.		1287 XE Place Ames, IA 50014 515-292-7606 515-292-1922(fax)
		TITLE 3 Cell 24 x 44 mm Low Light Tandem Module with 0.2mm FPC Tabs		
SCALE	1:1	DATE	1/18/2022	REF.
DRAWN	Sam Jones	DRAWING NO. INP3.6-24x44T		
CHECKED				

UNITS: mm