




EVALUATION KIT AVAILABLE  
Contact us to request yours



# The Advanced Panel Meter

## APM Range

**MODELS:** Volt Meter, Ammeter, Frequency Meter



**Programmable backlight color to alert user**  
UNDER CURRENT → OPTIMAL CURRENT → OVER CURRENT

**Warning flash**

**40** Segment curved bar graph display

Combined **digital and bar graph** display  
**\*NEW\*** 20 point non-linearization scaling

**Programmable scale**

**16** Position switch for selecting standard configurations

**NEW** 10 alarm set points

**PLC**

**2 outputs:** Digital (open collector) or Analog (4-20mA)  
**\*NEW\*** Digital Output Delays

**Less than 53mm deep**

**WIDE viewing angle**

Available in either **POSITIVE** or **NEGATIVE**

**USB 2.0**  
USB port for custom user settings via the **free easy-to-use software**

**Full 4 digit readout for accuracy**

**Programmable 4 digit star-burst display. Custom messages & annunciators**

The most visible, easy to use, programmable panel meter on the market. The APM provides accurate measurement with an immediate visual indication of critical parameters. It has been designed for engineers who require a more effective way of monitoring and displaying data.

The unique display combines traditional moving coil meters with the latest digital panel meters and it features a multitude of options that can be set using the APM software. The backlight can be programmed to change color to alert the operator when the current or voltage supply is too high or too low, reducing the risk of equipment failing and improving efficiency.

## Key Features

### Unique Display

- 40 segment bar graph display
- Large 4 digit display
- Separate Starburst display area for annunciators, messages and alarm information
- Dynamic backlight colour

### Programmable

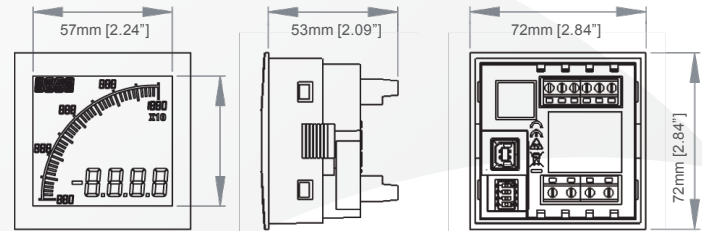
- Scale (offset, gain and linear) and Range (min and max)
- User selectable backlight color and intensity
- **\*NEW\*** 20 point non-linearization scaling for non-linear sensors e.g. thermocouples and pressure transducers
- **\*NEW\*** Ten independent alarm set-points
- **\*NEW\*** Configurable digital output delays (control the time output stays open/closed - .5 seconds – 120 seconds)

| MEASUREMENT                  | VOLT     | AMP                   | FREQUENCY |
|------------------------------|----------|-----------------------|-----------|
| Input range (DC)             | 0 - 600V | 0 - 5A                | -         |
| Max Using Shunt              |          | 1,000A                |           |
| Input range (AC)             | 0 - 600V | 0 - 5A                | 2 - 400Hz |
| Max Using CT                 |          | 10,000A               |           |
| Accuracy                     | 1%       | 1%                    | 0.5%      |
| Display modes                |          | Peak or RMS           |           |
| <b>ENVIRONMENTAL</b>         |          |                       |           |
| Temperature - operating      |          | -10 to +60°C          |           |
| Temperature - storage        |          | -40 to +70°C          |           |
| IP rating (from the front)   |          | NEMA 4 & 12 with IP65 |           |
| <b>POWER SUPPLY</b>          |          |                       |           |
| Nominal Input (AC or DC)     |          | 12-24 VAC/VDC         |           |
| <b>DISPLAY</b>               |          |                       |           |
| Number of digits             |          | 4                     |           |
| Digit height                 |          | 12mm [0.47"]          |           |
| Digit height of annunciator  |          | 6mm [0.23"]           |           |
| Number of message characters |          | 4                     |           |
| Backlight colours            |          | Red, Green, White     |           |
| LCD display                  |          | Positive or Negative  |           |
| <b>OUTPUT MODELS</b>         |          |                       |           |
| Max voltage                  |          | 34V                   |           |
| Max current                  |          | 500mA                 |           |
| Analogue output              |          | 4-20mA                |           |
| <b>CERTIFICATION</b>         |          |                       |           |
|                              |          | UL and cUL, CE, UKCA  |           |

### Visibility

- User adjustable backlight brightness and colour
- Large display
- Wide viewing angle (both horizontal and vertical)
- Custom annunciators
- Positive and negative LCD options for indoor or outdoor environments

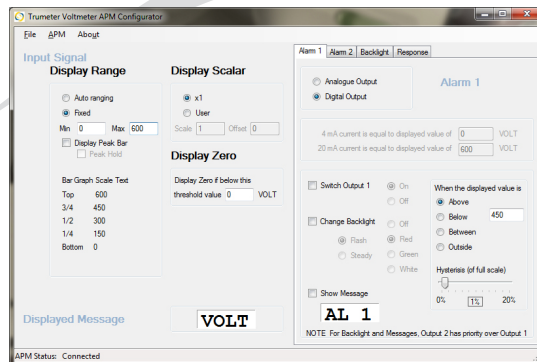
### Dimensions:



Panel cutout: 68mm x 68mm [2.68" x 2.68"] as per DIN43700/IEC61554

## Easy To Use Software

Just plug into any USB port on your PC, run the freely available APM Configurator application and you're off. No drivers required.



### Part Numbers: (POS LCD = Positive LCD; NEG LCD = Negative LCD)

| Volt                                   | Description                       | Amp         | Description                    | Frequency    | Description                       |
|--|-----------------------------------|-------------|--------------------------------|--------------|-----------------------------------|
| APM-VOLT-APO                           | APM VOLT METER, POS LCD W/OUTPUTS | APM-AMP-APO | APM AMMETER, POS LCD W/OUTPUTS | APM-FREQ-APO | APM FREQ METER, POS LCD W/OUTPUTS |
| APM-VOLT-ANO                           | APM VOLT METER, NEG LCD W/OUTPUTS | APM-AMP-ANO | APM AMMETER, NEG LCD W/OUTPUTS | APM-FREQ-ANO | APM FREQ METER, NEG LCD W/OUTPUTS |
| 022128-01                              | USB Cable                         |             |                                |              |                                   |
| 022150-01                              | APM Evaluation Kit                |             |                                |              |                                   |
| <b>By Request: Modbus Connectivity</b> |                                   |             |                                |              |                                   |
| APM-VOLT-APS                           | APM VOLT METER, POS LCD W/MODBUS  | APM-AMP-APS | APM AMMETER, POS LCD W/MODBUS  | APM-FREQ-APS | APM FREQ METER, POS LCD W/MODBUS  |
| APM-VOLT-ANS                           | APM VOLT METER, NEG LCD W/MODBUS  | APM-AMP-ANS | APM AMMETER, NEG LCD W/MODBUS  | APM-FREQ-ANS | APM FREQ METER, NEG LCD W/MODBUS  |