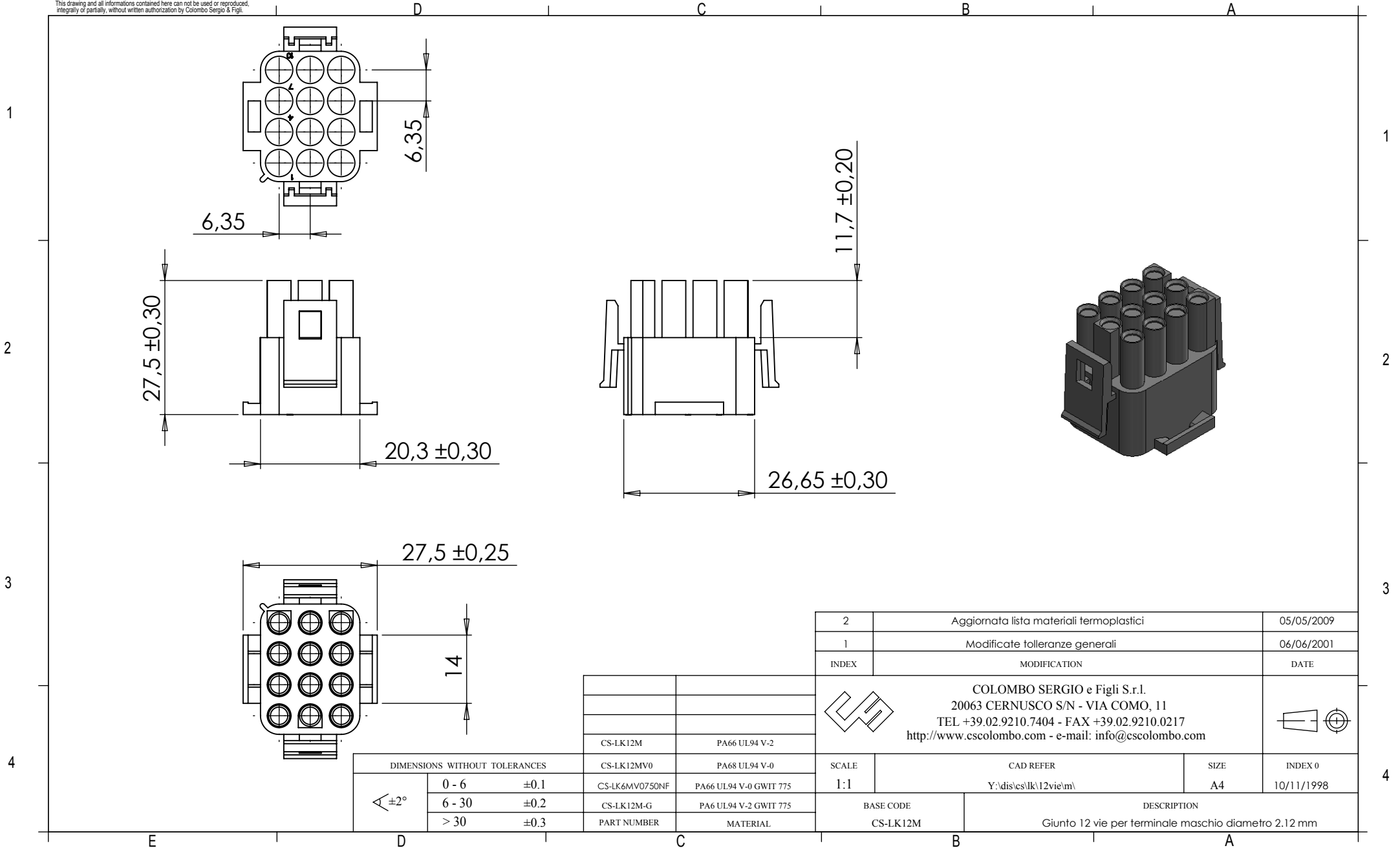
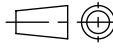


This drawing and all informations contained here can not be used or reproduced, integrally or partially, without written authorization by Colombo Sergio & Figli.



DIMENSIONS WITHOUT TOLERANCES		CS-LK12MV0	PA68 UL94 V-0
∠ ±2°	0 - 6	±0.1	CS-LK6MV0750NF PA66 UL94 V-0 GWIT 775
	6 - 30	±0.2	CS-LK12M-G PA6 UL94 V-2 GWIT 775
	> 30	±0.3	PART NUMBER MATERIAL

2	Aggiornata lista materiali termoplastici	05/05/2009
1	Modificate tolleranze generali	06/06/2001
INDEX	MODIFICATION	DATE
 <p>COLOMBO SERGIO e Figli S.r.l. 20063 CERNUSCO S/N - VIA COMO, 11 TEL +39.02.9210.7404 - FAX +39.02.9210.0217 http://www.cscolombo.com - e-mail: info@cscolombo.com</p>		
SCALE	CAD REFER	INDEX 0
1:1	Y:\dises\lk\12vie\m\	10/11/1998
BASE CODE	DESCRIPTION	
CS-LK12M	Giunto 12 vie per terminale maschio diametro 2.12 mm	